

# Display for Sale



**CARLISLE**



## Rothwell 29

**\$1,000,000 - \$1,100,000**



### Eliston Estate

24 Waterman Drive, Clyde

Size: 540m<sup>2</sup>

The Rothwell offers luxurious open-plan living for the entire family. The kitchen, meals and living areas flow into the alfresco, and the secluded kids' zone includes spacious bedrooms, bathroom and dedicated study nook. Whether you retreat into your private master suite, or entertain in your theatre room, the Rothwell will make you feel at home.

#### Key Features

- The heart of the home is the kitchen, complete with an oversized island bench and a generous walk-in pantry, making it perfect for meal prep and entertaining.
- The seamless connection between the indoor living areas and the alfresco space enhances the sense of openness, ideal for hosting guests or enjoying relaxed family time.
- A private master suite offers a peaceful retreat, featuring a large walk-in robe and a luxurious ensuite with double vanity.
- Well-sized bedrooms, a shared bathroom, and a study nook, creating an ideal environment for family.



#### For more information

Contact: Dan Parsons 0404 524 772

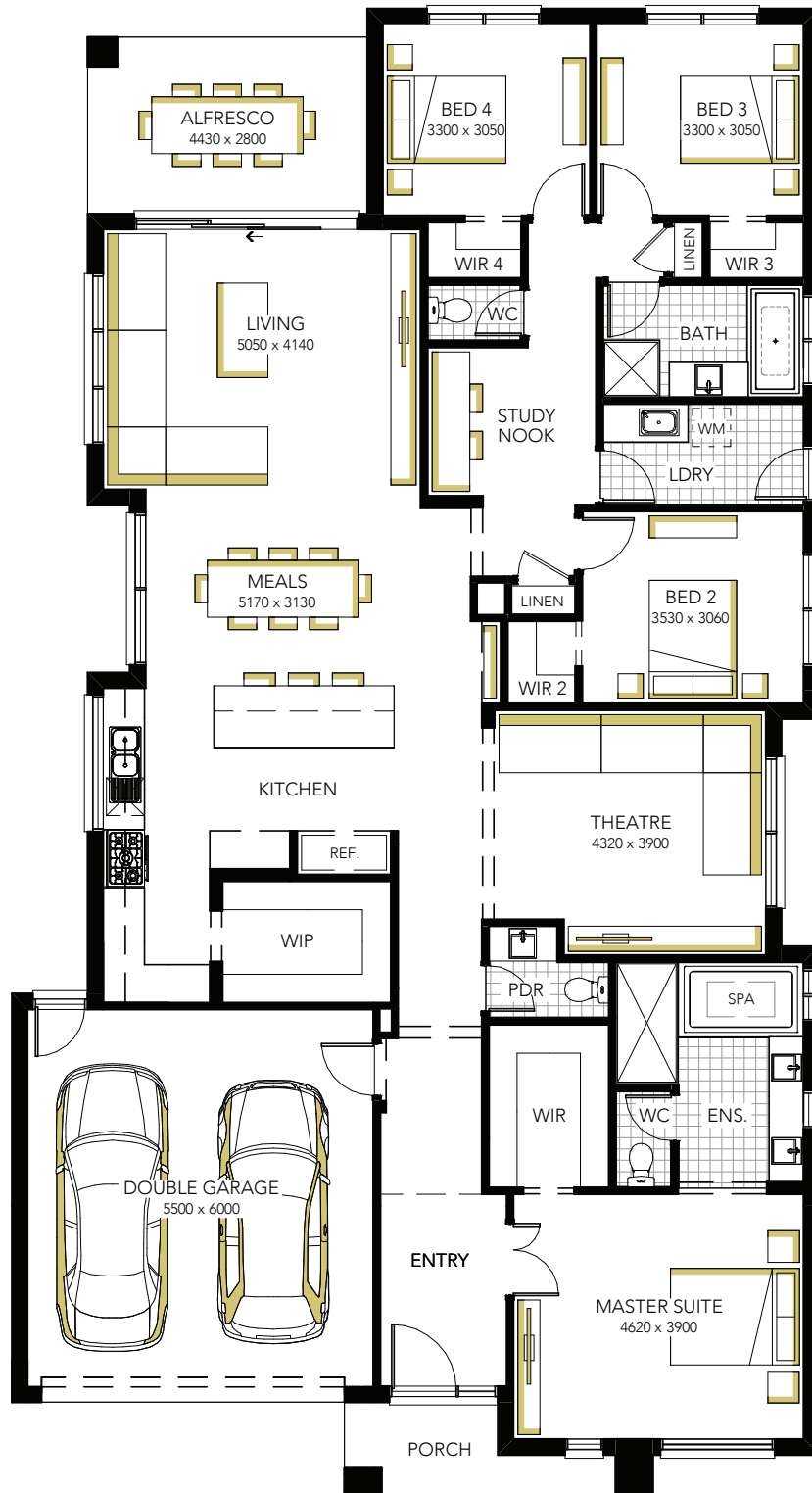
Lisa McLeod 0456 840 873

**AFFINITY**  
LUXURY LIVING

# Display for Sale



**CARLISLE**



**Rothwell 29**

**\$1,000,000 - \$1,100,000**

For more information:  
Contact Dan Parsons 0404 524 772 or Lisa McLeod 0456 840 873