

Display for Sale



CARLISLE



Illawarra Grand 38

\$1,150,000 - \$1,230,000



Eliston Estate

30 Waterman Drive, Clyde

Size: 448m²

The Illawarra is the ultimate in family living, with multiple living zones and a luxurious master retreat with expansive walk-in robe and ensuite, you'll never want to leave.

Key Features

- The design includes various living areas to accommodate different family activities and needs.
- The master bedroom serves as a private retreat, featuring an expansive walk-in robe and a spacious ensuite bathroom.
- A theatre room, ideal for movie nights, providing a secluded space away from the main living areas.
- The kitchen boasts an L-shaped island bench and a generous walk-in pantry, facilitating both everyday meals and entertaining.
- An additional living space upstairs includes a built-in study nook, making it a perfect area for children to study or play.

For more information

Contact: Dan Parsons 0404 524 772

Lisa McLeod 0456 840 873

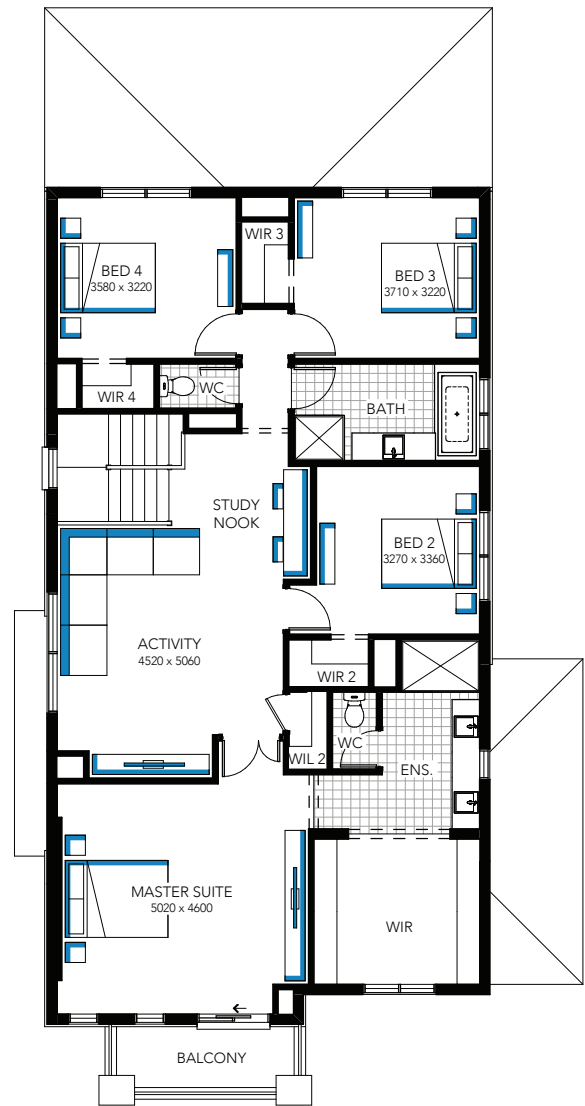
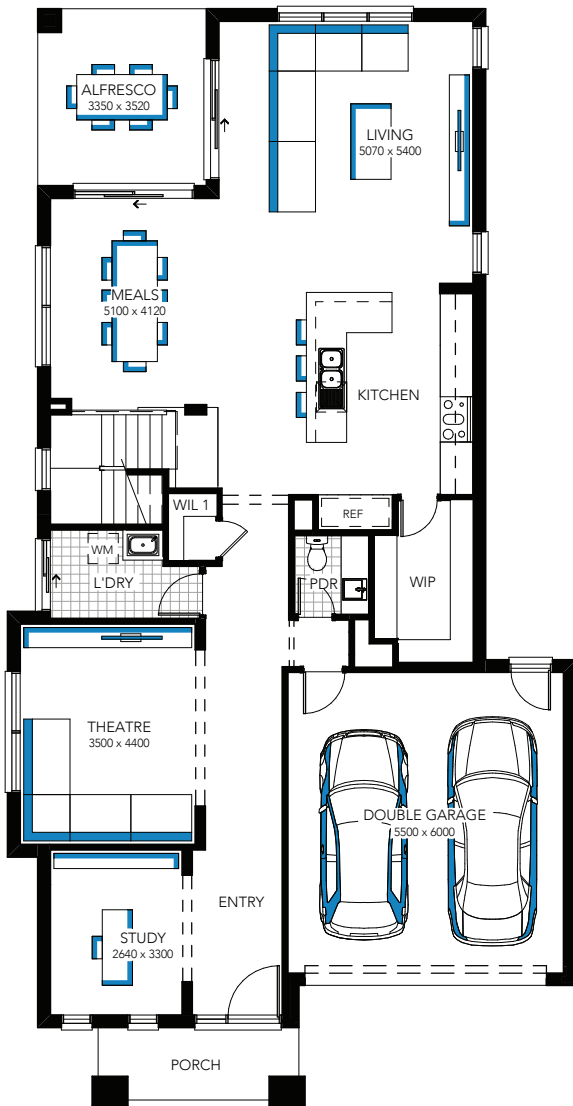


Inspire
CONTEMPORARY LIVING

Display for Sale



CARLISLE



Illawarra Grand 38

\$1,150,000 - \$1,230,000

For more information:
Contact Dan Parsons 0404 524 772 or Lisa McLeod 0456 840 873