

Display for Sale



CARLISLE



Kensington Grand 40

\$1,130,000 - \$1,220,000



Botanical Estate

25 Poppy Street, Mickleham, 3064

Lot Size: 512m²

This remarkable property offers a harmonious blend of style, functionality, and modern living. As you step inside, you'll be greeted by a dedicated study and exquisite formal lounge with gas fireplace. Venturing further into the space, the light-filled open plan living area serves as the heart of the home, with seamless access to the outdoor alfresco. The spacious kitchen is a culinary enthusiast's dream, featuring an L-shaped island bench, a walk-in pantry, Caesarstone benchtops, and a striking feature tiled splashback. In the rear corner you'll find a bonus living area which makes for a fantastic kids' playroom or dedicated theatre space. Upstairs, you'll find the fourth living area, a built-in kids' study zone, 3 secondary bedrooms with walk-in 'robes, spacious family bathroom and an exceptional master suite with huge shower, dual basin vanity, grand dressing room and front balcony. Indulge in the comfort of extra heavy-duty carpet with premium underlay, providing a soft underfoot experience, complemented by wide format porcelain tiles to the main living area, entry and wet areas. Quality finishes abound, like luxury window furnishings, wallpaper, pendant lights, downlights, zoned alarm system and TVs to the living, rumpus, activity and master suite. Step outside into the landscaped gardens, featuring timed irrigation to garden beds, exposed aggregate driveway and paths and tiled alfresco with ceiling fan and an outdoor gas fireplace, perfect for entertaining or enjoying the outdoors. Don't miss the opportunity to make this exceptional home your own.

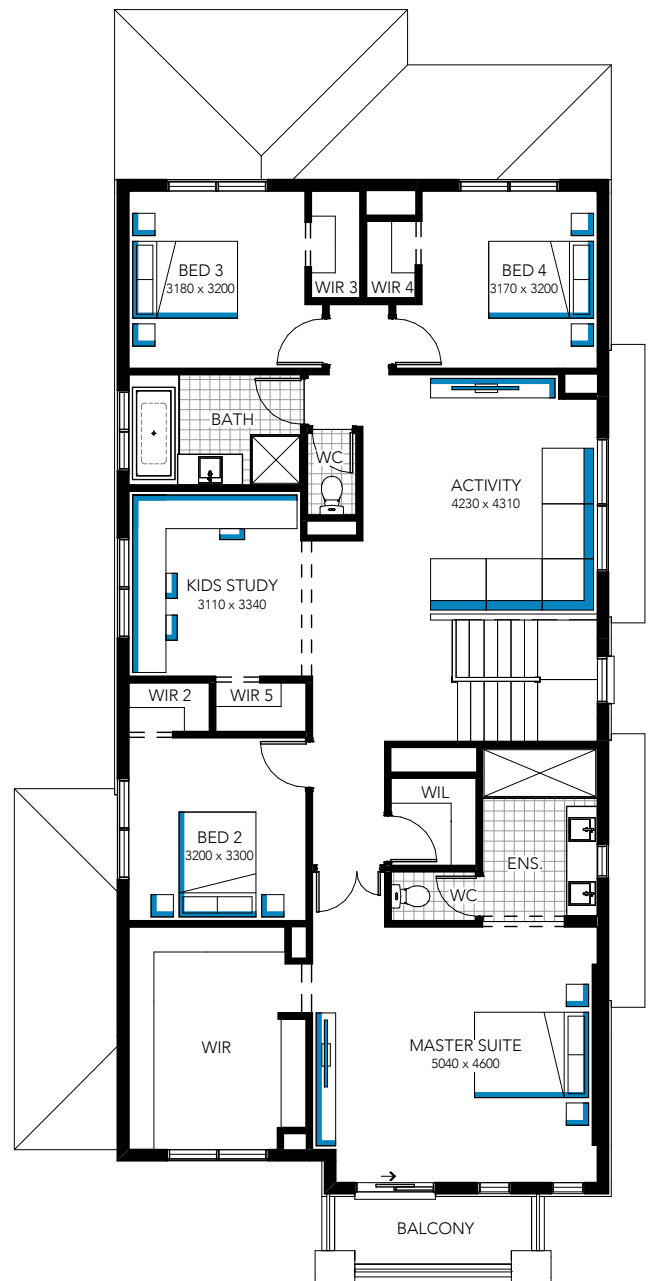
Ready to move in August 2024



**For more information
contact Hannah on 0467 667 741**

T-RANGE
TRUE LIVING

Display for Sale



Kensington Grand 40

For more information contact Hannah on 0467 667 741

\$1,130,000 - \$1,220,000