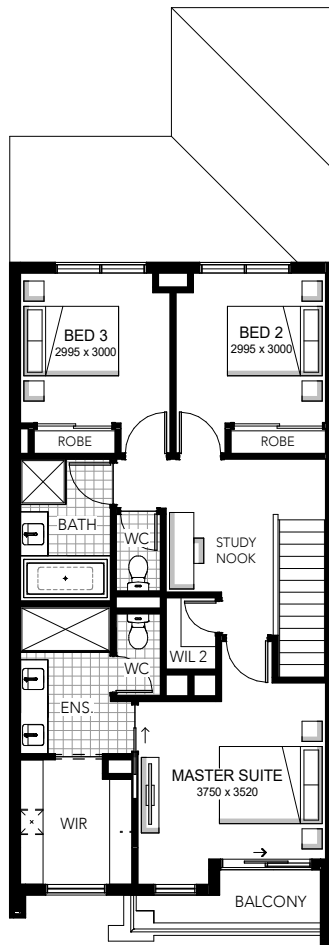
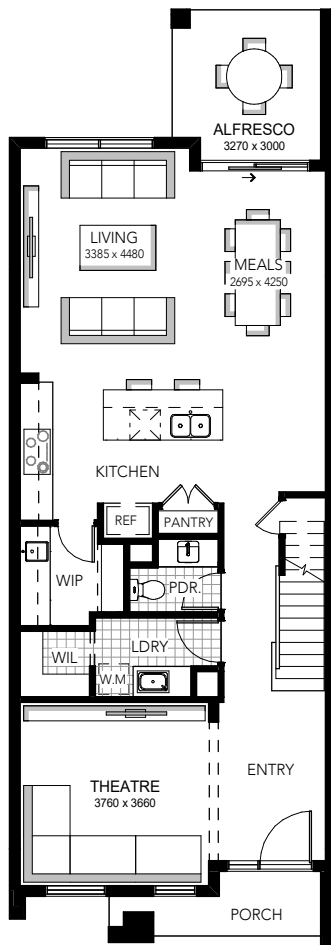
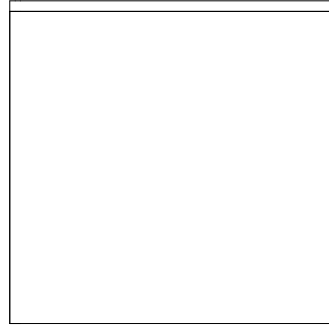
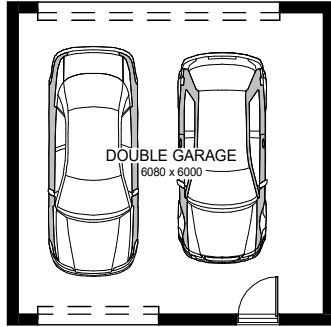


SALISBURY 25

3 | 2 | 2
 BEDROOMS | BATHROOMS | GARAGE



SALISBURY 25

MINIMUM BLOCK WIDTH	STANDARD DESIGNED TO SUIT (m)	EXTERIOR LENGTH	EXTERIOR WIDTH	HOUSE AREA TOTAL	SQUARES
6.5	6.50 x 32.00	18.65	6.48	236.34	25.44



Minimum lot sizes & dimensions may vary subject to fall of land, easement details, council & developer requirements. House size and dimensions on brochure based on Hardwick (H) facade. Sizes and dimensions may vary subject to facade election. Refer to working drawings for complete dimensions.

© 2021 Images are for illustrative purposes only and may depict upgrade options and homes as displayed. Refer to floor plan brochures or working drawings for specific detail. Some images may also depict features not supplied by Carlisle Homes including landscaping, pools, water features, window furnishings, fireplaces, wall finishes and finishes, cladding, in built joinery, decorative lighting, decor, furniture and flat profile roof tiles (some of these items may be available at an additional cost, visit your nearest Carlisle Homes Display Centre for full specifications). Facade details such as entry doors, window sizing and placement may vary between house types and sizes. Refer to floor plan brochures or working drawings for specific detail.