

# Display for Sale



**CARLISLE**



## Redcliffe 27

**\$900,000 - \$990,000**



### Eliston Estate

28 Waterman Drive, Clyde

Size: 512m<sup>2</sup>

The Redcliffe offers everything you need to entertain your family and friends; large open-plan kitchen, living and meals area, dedicated theatre room, and alfresco dining for warm summer days. The spacious bedrooms, all with walk-in robes, and private master suite make this the perfect home for the family.

### Key Features

- Large open-plan kitchen, meals and living space, and adjoining alfresco
- Parents enjoy the private master suite with double vanity ensuite and spacious walk-in robe
- Abundant in storage space with all bedrooms equipped with walk-in robes
- Be entertained by the dedicated theatre room at the rear of the house



### For more information

Contact: Dan Parsons 0404 524 772

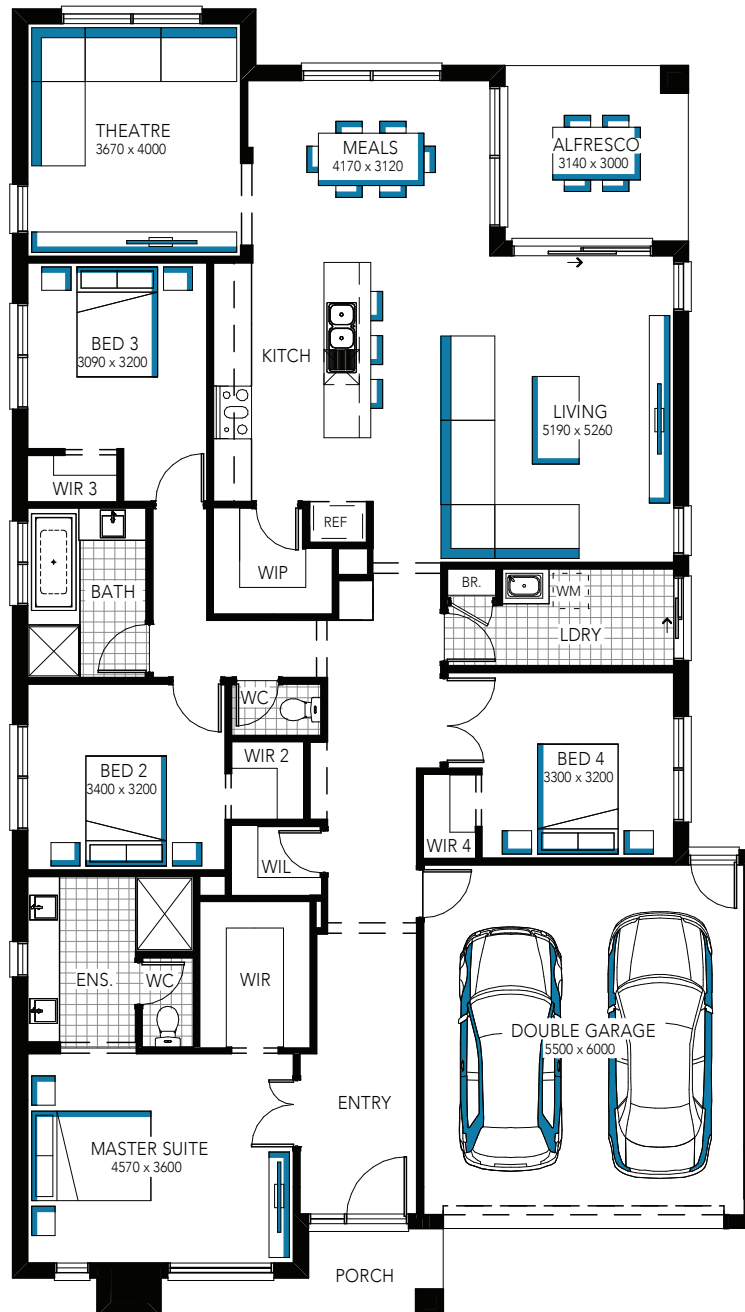
Lisa McLeod 0456 840 873

**Inspire**  
CONTEMPORARY LIVING

# Display for Sale



**CARLISLE**



**Redcliffe 27**

**\$900,000 - \$990,000**

For more information:  
Contact Dan Parsons 0404 524 772 or Lisa McLeod 0456 840 873