

# Display for Sale



*Ready to move in now*

## Kensington Grand 40

**\$1,000,000 - \$1,060,000**



### Botanical Estate

25 Poppy Street, Mickleham, 3064

Lot Size: 512m<sup>2</sup>

This remarkable property offers a harmonious blend of style, functionality, and modern living. The light-filled open plan living area serves as the heart of the home, with seamless access to the outdoor alfresco. The spacious kitchen is a culinary enthusiast's dream, featuring an L-shaped island bench, a walk-in pantry, Caesarstone benchtops, and a striking feature tiled splashback. Upstairs, you'll find the fourth living area, a built-in kids' study zone, 3 secondary bedrooms with walk-in 'robes, spacious family bathroom and an exceptional master suite with huge shower, dual basin vanity, grand dressing room and front balcony. Indulge in the comfort of extra heavy-duty carpet with premium underlay, providing a soft underfoot experience, complemented by wide format porcelain tiles to the main living area, entry and wet areas. Quality finishes abound, like luxury window furnishings, wallpaper, pendant lights, downlights, zoned alarm system and TVs to the living, rumpus, activity and master suite. Step outside into the landscaped gardens, featuring timed irrigation to garden beds, exposed aggregate driveway and paths and tiled alfresco with ceiling fan and an outdoor gas fireplace, perfect for entertaining or enjoying the outdoors. Don't miss the opportunity to make this exceptional home your own.

**Ready to move in now**



Scan for more information and to inspect the property

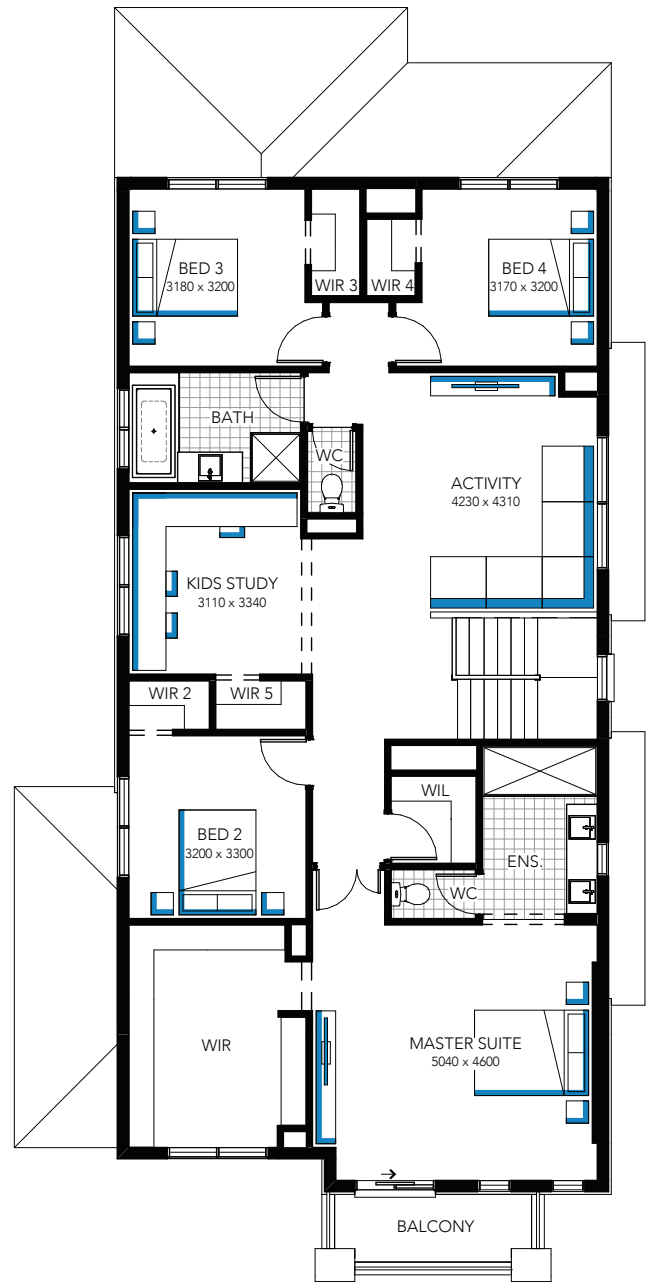
For more information  
contact Hannah on 0467 667 741

**Inspire**  
CONTEMPORARY LIVING

# Display for Sale



**CARLISLE**



## Kensington Grand 40

For enquiries contact Hannah on 0467 667 741



Scan for more information and to inspect the property

**\$1,000,000 - \$1,060,000**