

Display for Sale



CARLISLE



Ready to move in now

Matera 29

\$820,000 - \$870,000



Botanical Estate

23 Poppy Street, Mickleham, 3064

Lot Size: 448m²

Discover the perfect blend of modern living and Scandi design in this exceptional home. Boasting 4 bedrooms, 2 stylish bathrooms, 3 generous living rooms and a 2-car garage, it offers plenty of space for the growing family.

The expansive master suite, complete with a dual basin vanity and a generously sized shower in the ensuite, along with a sizable walk-in wardrobe, is a highlight. The kitchen is a chef's delight, boasting a large island bench, walk-in pantry, Caesarstone benchtops, and a textured tile splashback. This open-plan area, overlooking the meals and living spaces and extending to the alfresco, is destined to host precious moments with family and friends.

Premium features include extra heavy-duty carpet with superior underlay for ultimate comfort, stunning porcelain tile flooring in the main living areas and entry, and luxurious window finishes throughout. Revel in the added conveniences of a zoned alarm system, downlights and pendant lights, and TVs in the living and rumpus rooms. Outside, the landscaped gardens with timed irrigation, exposed aggregate driveway, and paths make maintaining an impressive exterior effortless. The tiled alfresco area, equipped with a ceiling fan, invites relaxation and enjoyment of outdoor living. This property embodies a lifestyle of both comfort and elegance, providing all the essentials for modern living. Seize the opportunity to make it yours.

Ready to move in now



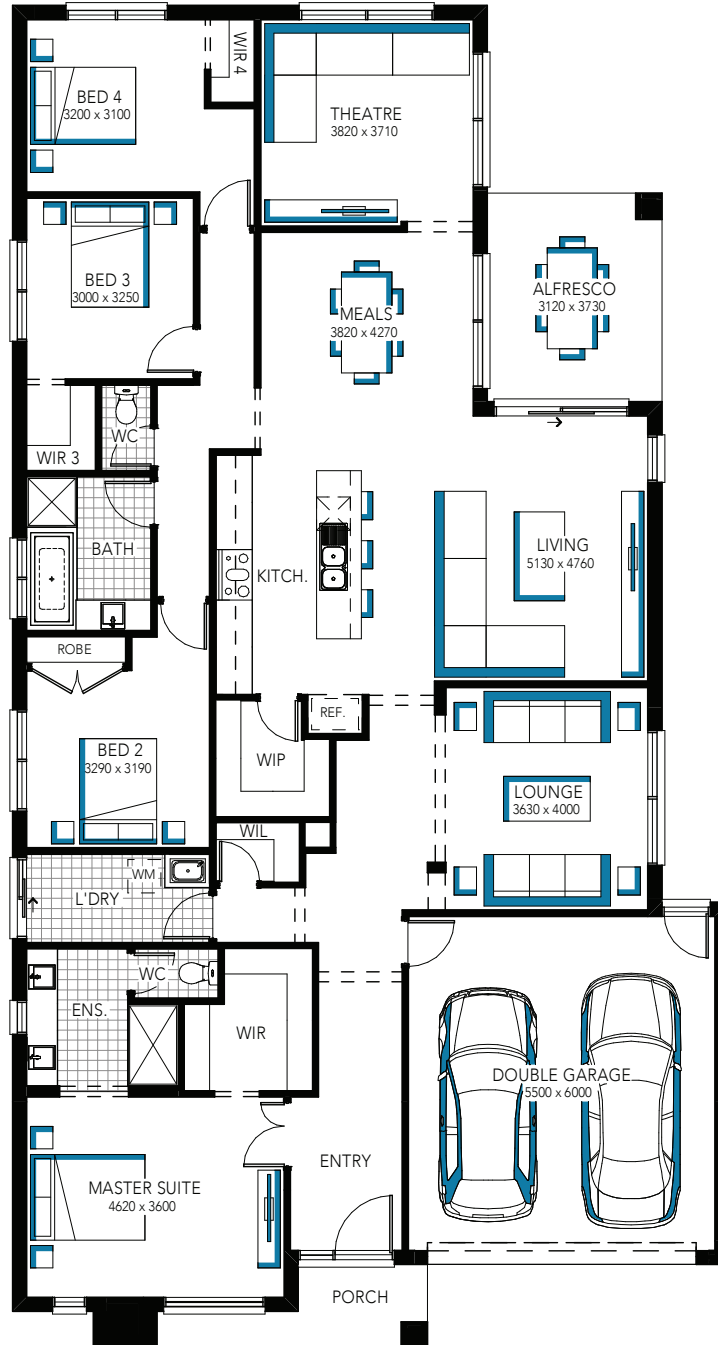
For more information
contact Hannah on 0467 667 741

Inspire
CONTEMPORARY LIVING

Display for Sale



CARLISLE



Matera 29

\$820,000 - \$870,000

For more information contact Hannah on 0467 667 741