

# Display for Sale



**CARLISLE**



## Piermont 29

**\$920,000 - \$980,000**



### Attwell Estate

3 Best Drive, Deanside, 3335

Size: 510m<sup>2</sup>

Be prepared to be impressed by the wonders of the flawless Piermont. Packed with versatile living options and innovative features such as a kids' activity zone and dedicated study nook this home presents an inviting, relaxing environment for the whole family to enjoy.

You'll love these key features:

- Caesarstone benchtops to kitchen
- Glass splashback
- Extra heavy-duty carpet with premium underlay
- Engineered timber flooring
- Luxury window furnishings
- Built-in laminate joinery as displayed
- Wallpaper
- Refrigerated cooling
- Zoned alarm system
- Downlights and pendant lights throughout
- TVs to 3 living areas
- Landscaped gardens with timed irrigation
- Exposed aggregate driveway and paths
- Paved alfresco

**Ready to move in September 2024**



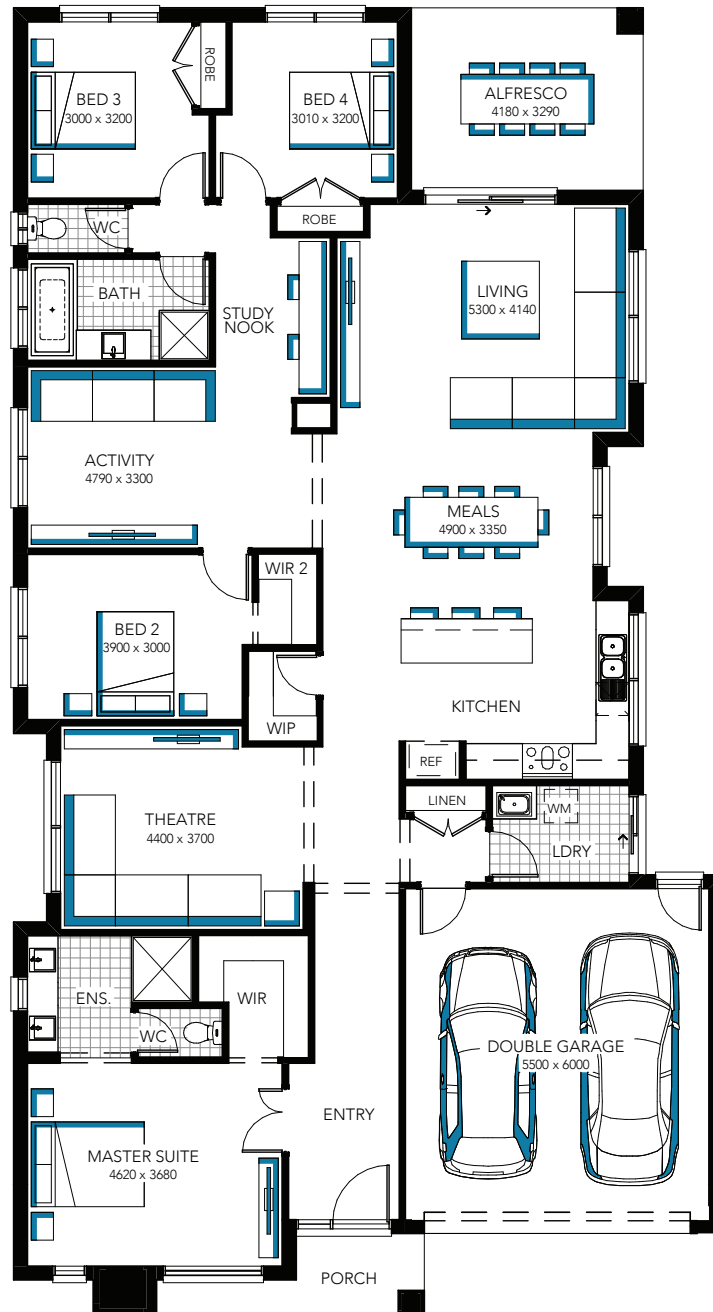
**For more information  
contact Rob on 0408 808 698**

**Inspire**  
CONTEMPORARY LIVING

# Display for Sale



**CARLISLE**



**Piermont 29**

**\$920,000 - \$980,000**

For more information contact Rob on 0408 808 698