

Display for Sale



Bridgewater 27

\$820,000 - \$880,000

Leaseback available



Coridale Estate

16 Coridale Boulevard, Lara, 3212

Block Size: 511m²

The Bridgewater has perfected the balance between entertaining and rest. The central living hub with kitchen, meals, and alfresco provides the perfect spot to entertain all your family and friends. Then, at the end of the night, send the kids to their secluded sleep wing, whilst you retreat to your own private master suite..

Key Features

- Caesarstone kitchen benchtops
- Zoned alarm system
- Luxury window furnishings
- Porcelain floor tiles
- Extra heavy-duty carpet with premium underlay
- Secluded kids zone with three bedrooms
- Downlights and pendant lights throughout
- TV to both living areas
- Decked alfresco

For more information

Contact: Robina Taneja

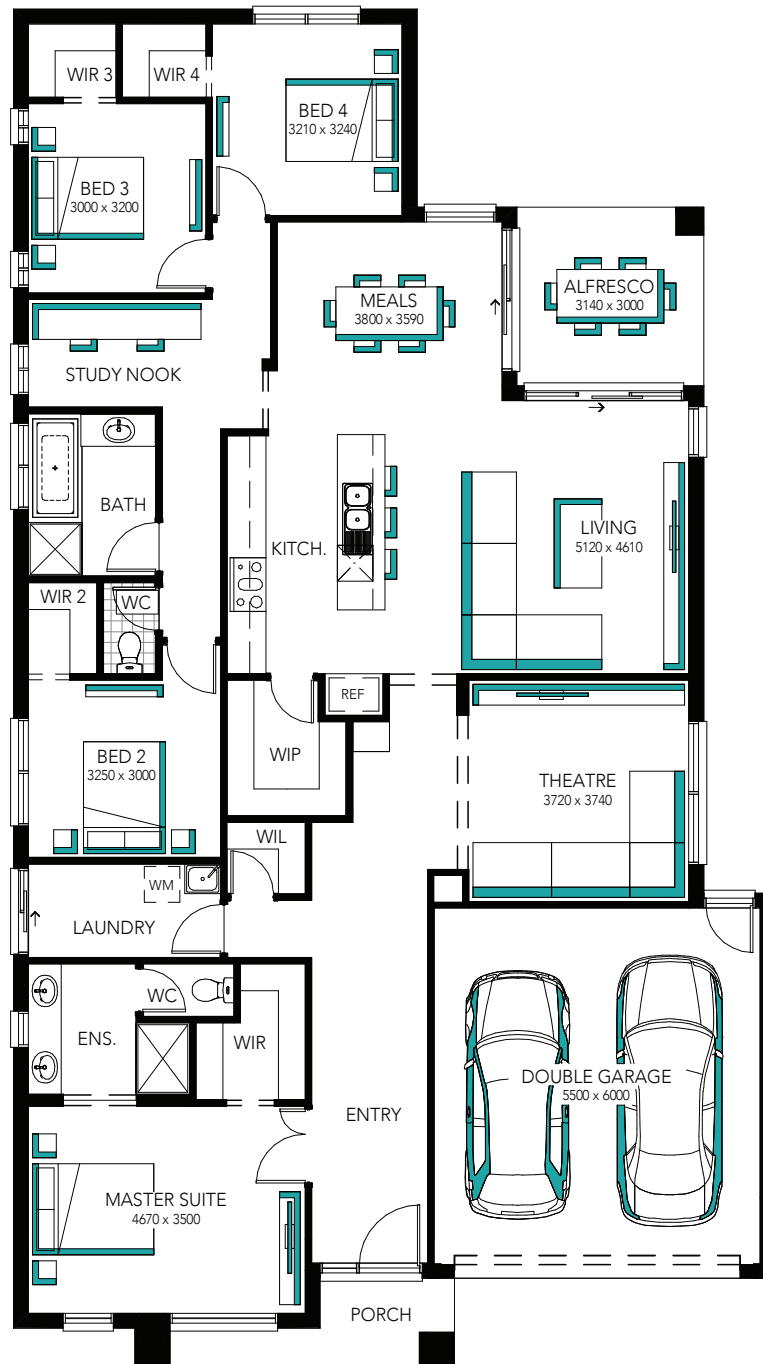
0451 921 286

robina.taneja@carlislehomes.com.au



easy
LIVING

Display for Sale



Bridgewater 27

For more information contact Robina Taneja on 0451 921 286

\$820,000 - \$880,000

Leaseback available