

Display for Sale



Edgewood 23

\$750,000 - \$820,000

Leaseback available



Coridale Estate

14 Coridale Boulevard, Lara, 3212

Block Size: 465m²

The Edgewood has effortlessly perfected the balance between the busyness of life and the importance of rest. The central living hub easily caters for growing families, while the dedicated sleep wing creates a peaceful haven for kids.

Key Features

- Caesarstone kitchen benchtops
- Zoned alarm system
- Luxury window furnishings
- Porcelain floor tiles
- Extra heavy-duty carpet with premium underlay
- Built-in laminate joinery as displayed
- Downlights and pendant lights throughout
- TV to both living areas
- Decked alfresco

For more information

Contact: Robina Taneja

0451 921 286

robina.taneja@carlislehomes.com.au

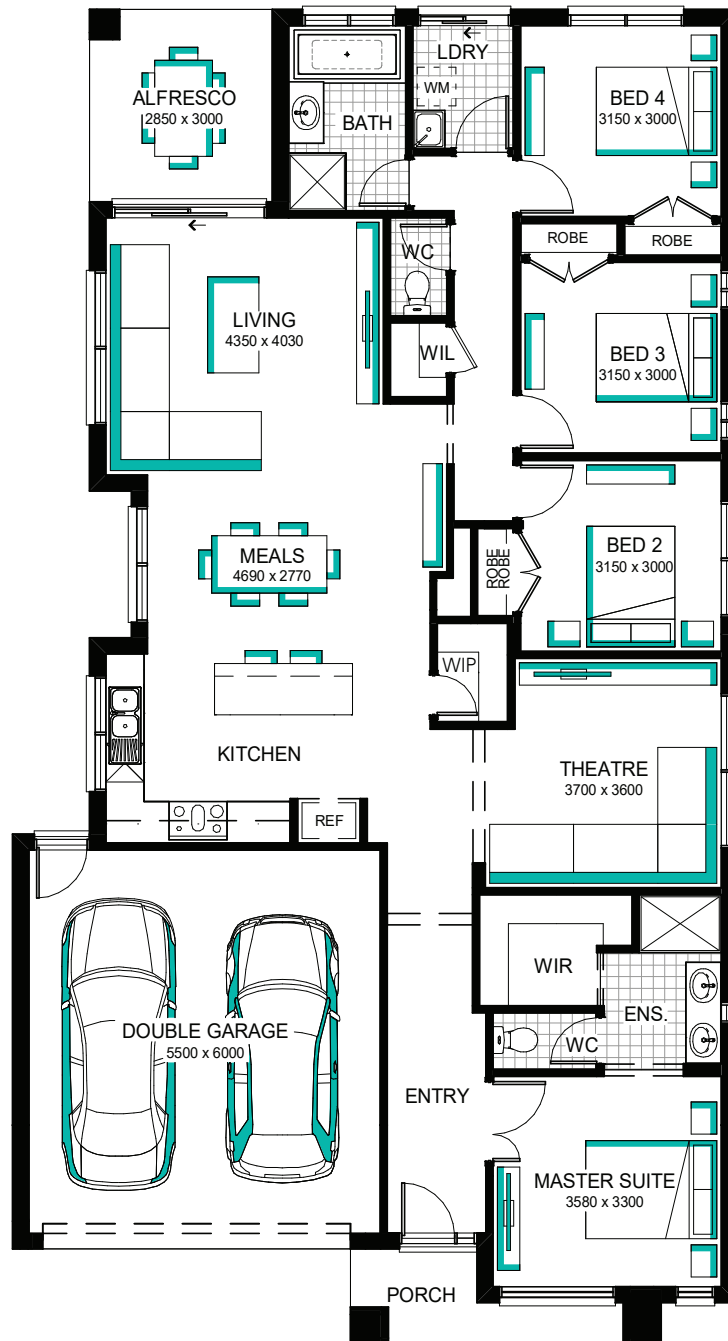


easy
LIVING

Display for Sale



CARLISLE



Edgewood 23

For more information contact Robina Taneja on 0451 921 286

\$750,000 - \$820,000

Leaseback available